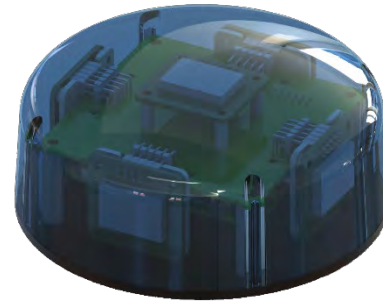




OleaVision360™ Data Sheet

- 5 integrated 24 GHz Radar Sensors
- Continuously scans surroundings and terrain in harsh environments
- Up to 5 directions of obstacle avoidance
- Uses one ultra-light weight, 100 mm size sensor
- One-centimeter accuracy in anticipation of obstacles
- Detection range of 20 meters (65 feet)
- Discriminates between animate and in-animate objects
- Hemispherical field of view without rotors or beam-forming technologies



Processing, Programming & Memory

- On-board, high-performance 16-bit data acquisition system
- Processor Quad core Cortex-A53 64-bit SoC @ 1.4 GHz; 512MB LPDDR2 SDRAM
- MCU Cortex-M4 32-bit ARM

Connectivity

- CAN Bus Interface (data & power)
- Dual-band 2.4 GHz and 5 GHz wireless LAN, and Bluetooth 4.2/BLE

Power

- 5 volts DC Power source from Drone via CAN bus

Compliance

- Compliance to FCC, CE, ETSI, UL or FDA certifications
- Units are fully RoHS compliant
- Radar subsystem complies with ETSI 300 440 and FCC 15.245 (US version)
 - Radar frequencies:
 - 24.05 – 24.25 GHz (ISM/EU)
 - 24.075 – 24.175 GHz (US/JP)

Software and Data Acquisition, Storage & Analysis

- Licensed Software (delivered with OS-9005)
 - On-board Olea customized firmware/software
 - OleaVision™ Remote Monitoring Dashboard
 - Compatible with DJI Matrice 100 drones
- OleaVision™ Guidance System Machine Learning Algorithms & Analytic software available

Ask us about our capabilities to deliver device features & custom software to meet your requirements

Note: All specifications are subject to change without notice and to verification at time of purchase.

© 2019 Olea Systems, Incorporated. All rights reserved. Olea, Olea Sensor Networks, Olea HeartSensor, Olea HeartSignature, Olea Authentication Token, OAT, OleaVision, OleaVision360, OleaWave and OleaSense are trademarks of Olea Systems, Incorporated. Other trademarks (registered or otherwise), names and brands may be claimed as the property of Olea Systems, Incorporated or by others.